

# R series, Old vs New comparison sheet

The new R series has aimed to upgrade its performance and, therefore has changed the design of its housing.

The R series characteristics

- ① The input shaft speed has been improved to 2000 min<sup>-1</sup> increased by 11% from the previous series.
- ② The allowable duty factor has been increased to 25% ED which is doubled from the previous series.
- ③ The trapezoidal screw types product life has been increased to 10 km which is doubled from the previous series (under our test condition).
- ④ The allowable input power of the RSG, RMG, RSY series have increased as shown in the table below as well.
- ⑤ The smoothy screw jack series have been changed its product code, although there are no changes to its specifications.
- ⑥ The design of the housing has been improved, although there is no change in the dimension and mounting pitch.

The old JS type with M8 taps for installing has discontinued. Now,  $\phi 7$  non-threaded through holes are provided for the new RS type instead.

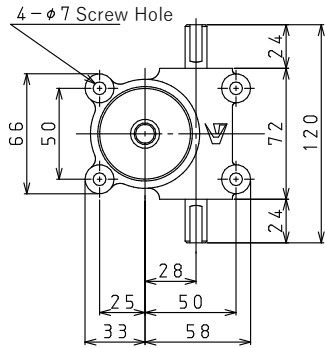
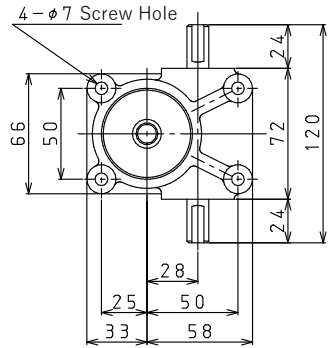
If the old JS series is installed with the M8 taps / through holes, for installation of the new RS series, use the M6 bolts instead.

Trapezoidal Screw Type		Old	New	Old	New	Old	New	Old	New	Old	New
	Series/Product code	JMG	<b>RMG</b>	JSG	<b>RSG</b>	JSG	<b>RSG</b>	JMY	<b>RMY</b>	JSY	<b>RSY</b>
	Capacity - kN	2		5				2		5	
	Type of worm gear ratio	H		H		L		H		H	
	Allowable maximum input speed - min <sup>-1</sup>	1800	<b>2000</b>	1800	<b>2000</b>	1800	<b>2000</b>	1800	<b>2000</b>	1800	<b>2000</b>
	Maximum lifting screw speed - mm/min	1800	<b>2000</b>	1440	<b>1600</b>	300	<b>333</b>	7200	<b>8000</b>	5760	<b>6400</b>
	Allowable input power - kW	0.32	0.32	0.6	<b>0.63</b>	0.23	<b>0.25</b>	0.11	<b>0.32</b>	0.15	<b>0.63</b>
	Allowable duty factor - %ED	12.5	<b>25</b>	12.5	<b>25</b>	12.5	<b>25</b>	12.5	<b>25</b>	12.5	<b>25</b>
	Product life (Expected travel distance) - km	5	<b>10</b>	5	<b>10</b>	5	<b>10</b>	5	<b>10</b>	5	<b>10</b>

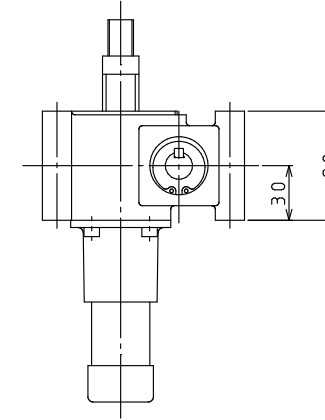
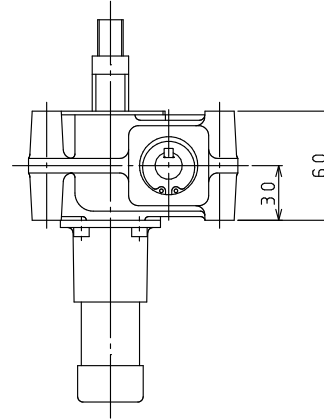
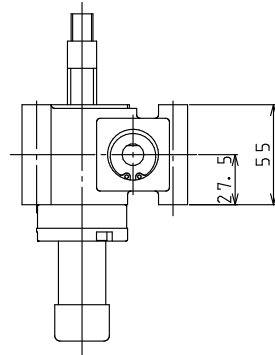
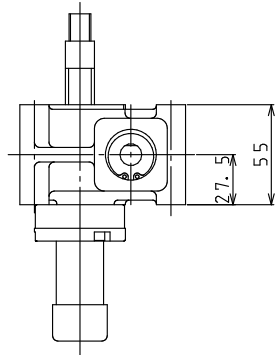
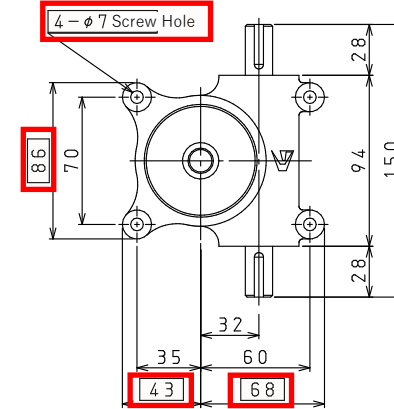
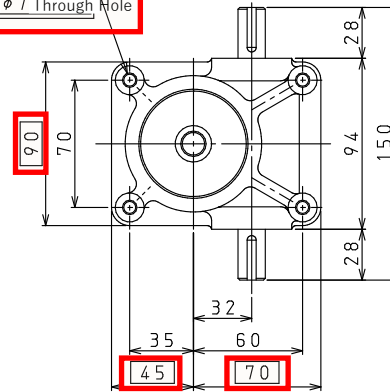
Ball Screw Type		Old	<b>New</b>	Old	<b>New</b>	Old	<b>New</b>
	Series/Product code	JSB	<b>RSB</b>	JSB	<b>RSB</b>	JSF	<b>RSF</b>
	Capacity - kN	4				4	
	Type of worm gear ratio	H		L		H	
	Allowable maximum input speed - min <sup>-1</sup>	1800	<b>2000</b>	1800	<b>2000</b>	1800	<b>2000</b>
	Maximum lifting screw speed - mm/min	1800	<b>2000</b>	375	<b>417</b>	5760	<b>6400</b>
	Allowable input power - kW	0.3	0.3	0.3	0.3	0.3	0.3
	Allowable duty factor - %ED	12.5	<b>25</b>	12.5	<b>25</b>	12.5	<b>25</b>

Smoothy Screw Jack	Old	<b>New</b>	Old	<b>New</b>
	JMS	<b>RMS</b>	JSS	<b>RSS</b>

# R series, Old vs New comparison sheet



4-M8 Screw Hole  
Screw depth 15  
Bottom Hole φ7 Through Hole



Old JM- series

New RM- series

Old JS- series

New RS- series

The  indicates the areas that differ from the old JS\* type to the new RS\* type.