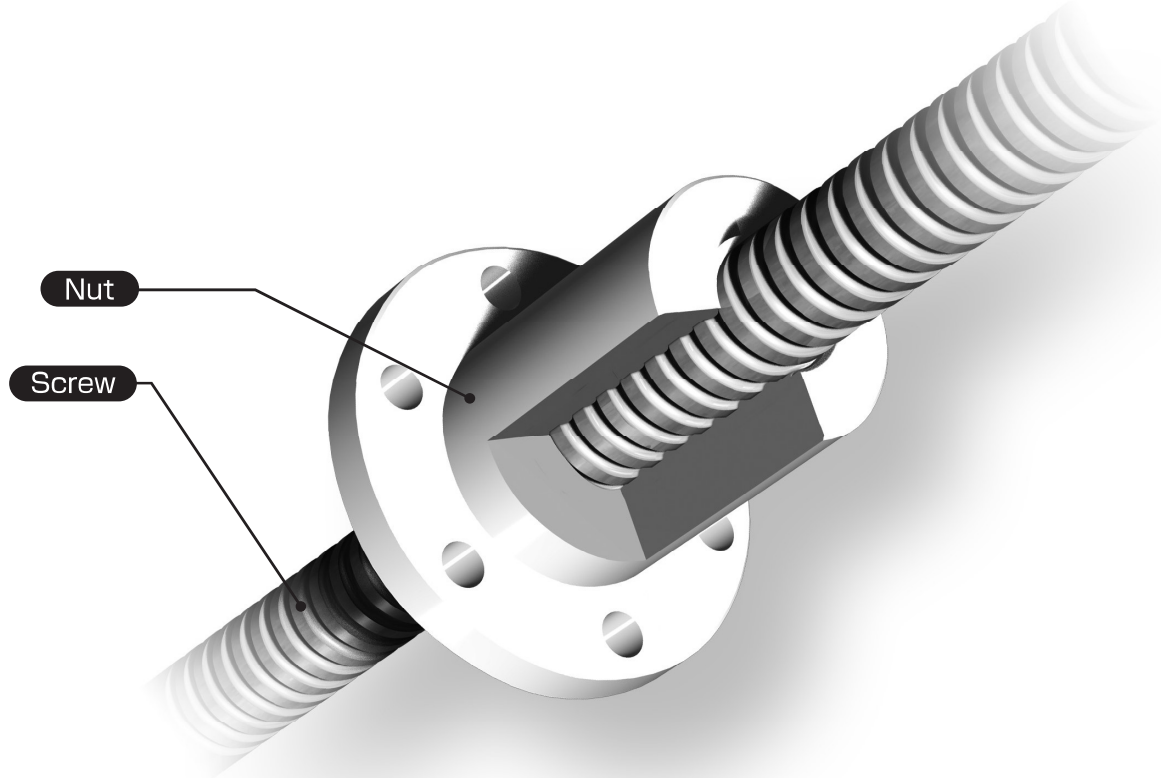


Smoothy
Screw

Smoothy Screw

A smoothy screw is composed of an integrated combination of "a nut and balls" of a "ball screw", and is highly efficient. A smoothy screw simply consists of only two components: a nut made of PET (polyethylene terephthalate), and a SUS screw, which has the same shape as the ball screw.

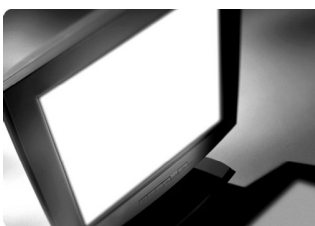
Construction



Features

- **High transmission efficiency (50%)** _____
It realizes much higher efficiency compared to trapezoidal screw.
- **Smooth operation without oiling** _____
The adoption of the nut made of a new material allows for smooth operation, and it can be used without supplying oil.
- **Long life and little wear** _____
The high-strength nut is superior in durability, and can be used reliably for a long time.
- **High quality** _____
Screws are processed, assembled, and inspected at a factory with an adequate quality control system, so we can deliver high-quality products.

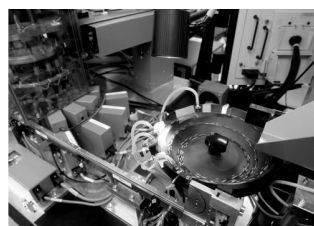
Application



FPD Semiconductor



Food machine

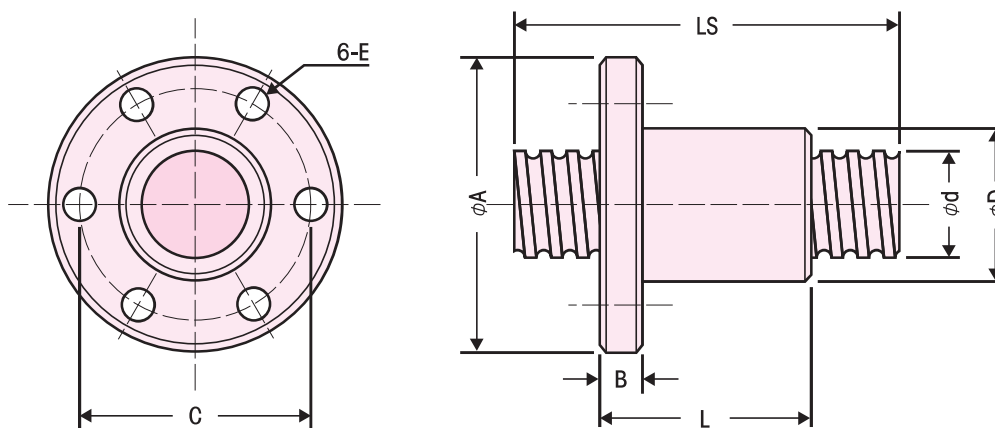


Medical machine



Office automation equipment

Dimensional Drawing



Specifications

UNIT mm

| Nominal outer diameter of Screw | Lead | Root diameter of Screw | Allowable load W(N) | Allowable WN value | Nut dimensions | | | | | | Standard screw length LS |
|---------------------------------|------|------------------------|---------------------|--------------------|----------------|--------|------------------|---------|---------------|------------|--------------------------|
| | | | | | Outer diameter | Length | Flange | | Mounting hole | | |
| | | | | | D | L | Outer diameter A | Width B | PCD C | Diameter E | |
| 10 | 4 | 8.2 | 1000 | 1.9×10^5 | 19 | 32 | 36 | 5 | 28 | 4.5 | 300,500 |
| 12 | 4 | 10.2 | 1500 | 2.3×10^5 | 22 | 38 | 39 | 5 | 31 | 4.5 | 300,500 |
| 14 | 5 | 11.3 | 3500 | 4.7×10^5 | 30 | 60 | 50 | 10 | 40 | 4.5 | 300,500 |
| 16 | 5 | 13.3 | 4000 | 4.6×10^5 | 30 | 60 | 50 | 10 | 40 | 4.5 | 300,500,1000 |
| 18 | 5 | 15.3 | 4500 | 4.6×10^5 | 34 | 60 | 63 | 12 | 49 | 5.5 | 300,500,1000 |
| 20 | 5 | 17.3 | 6000 | 5.5×10^5 | 40 | 70 | 60 | 10 | 50 | 5.5 | 500,1000,1500,2000 |
| 25 | 5 | 22.3 | 7500 | 5.4×10^5 | 42 | 70 | 71 | 12 | 57 | 6.6 | 500,1000,1500,2000 |
| 25 | 10 | 21.5 | 5000 | 3.7×10^5 | 44 | 80 | 80 | 15 | 62 | 9 | 500,1000,1500,2000 |
| 28 | 6 | 24.5 | 10500 | 6.8×10^5 | 50 | 80 | 79 | 15 | 65 | 9 | 500,1000,2000,2500 |
| 32 | 10 | 27.7 | 12500 | 7.1×10^5 | 55 | 110 | 97 | 18 | 75 | 11 | 500,1000,2000,3000 |

- Screws must be used within the above-mentioned WN values. WN value is expressed as allowable load W (N) x allowable rotation speed N (min⁻¹).
- MAX min⁻¹: 1200 min⁻¹
- Allowable operating temperature: -20 to 60 degrees C
- Special paste is applied for improving initial conformability at the time of shipment. As the paste is optionally available, please place an order if your usage conditions demand it.
- The accuracy is equivalent to JIS C-10 (ball screw).

Product code

● Please order smoothy screws using the following product code

